

Digital Sandbox Workshop
Summer 2003

Logos: University of Pittsburgh, Pittsburgh Digital Greenhouse, Penn State, Electrical & Computer Engineering

Welcome!

- We had a good year...
 - We'll tell you about it
 - Discuss how to best use what we have done
 - Discuss how to make it better
- We are expanding our goals...
 - Full-custom VLSI design (layout)
 - New Design Kits, consolidating existing ones
 - Organized way to capture design flow knowledge
 - We need feedback to increase impact

Electrical & Computer ENGINEERING

Sandbox Mission

- Developing, sharing, supporting CAD tool flow
 - Graduate design classes (Sandbox Design Experience Class)
 - Advanced Undergraduate Classes
 - PDG Short Courses
 - Research
- Providing Technology for Collaborative Design
 - Sandbox Design Experience Class

Electrical & Computer ENGINEERING

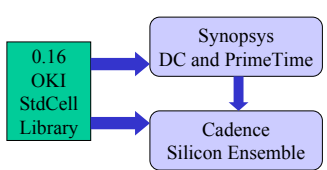
My New Idols

- CIC in Hsinchu, Taiwan
 - <http://tn-www.cic.org.tw/en/>
- Activities:
 - Design flow development, support (and testing!)
 - Every tool obtainable from CAD tool vendors
 - Training using tools (7462 students/year!)
 - Multi-chip Wafer Fabrication (300 designs/year!)
 - Chip testing facilities (test chip, or no more fab)
- I wish we could do this all
 - CIC has a budget of \$45M and a staff of 40 people



Electrical & Computer ENGINEERING

Status Summary (Current) The SDX Flow



```

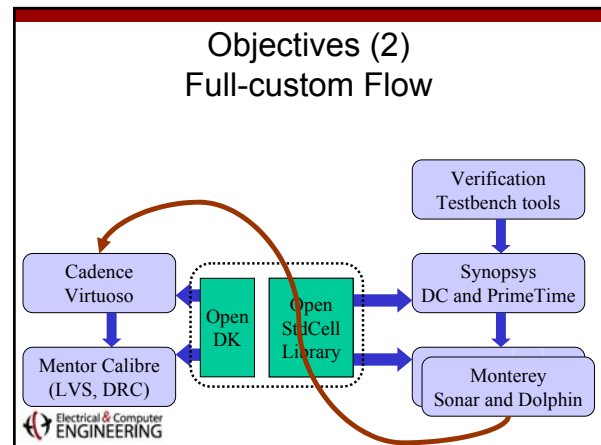
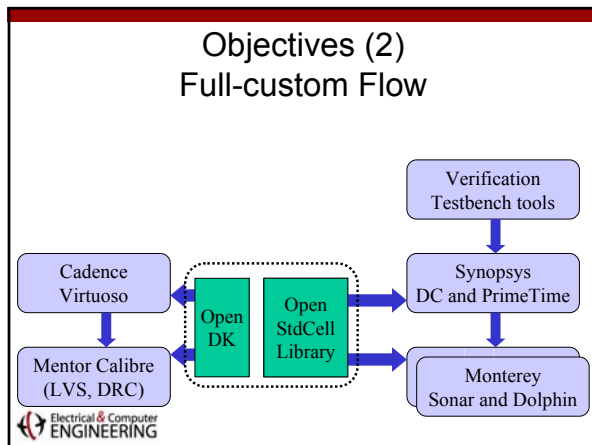
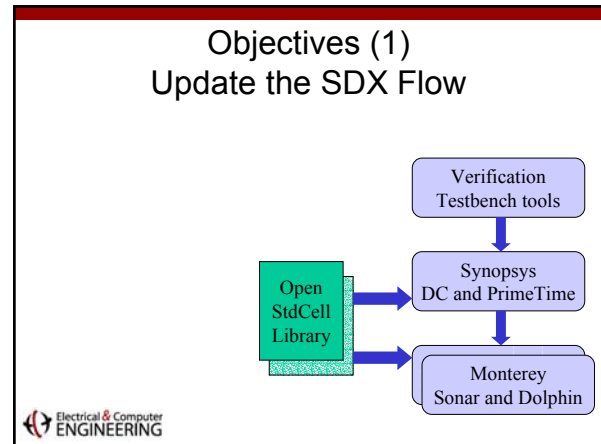
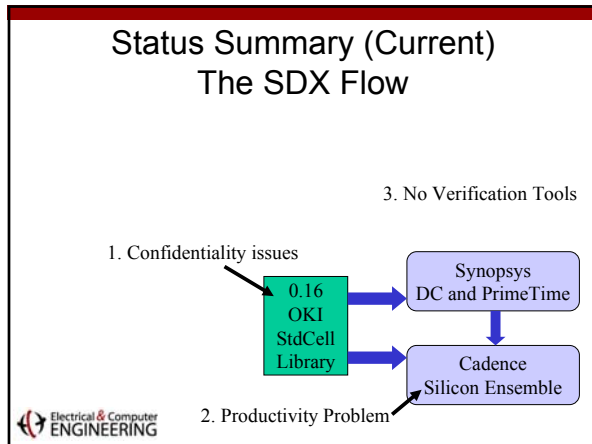
    graph TD
      A[0.16 OKI StdCell Library] --> B[Synopsys DC and PrimeTime]
      A --> C[Cadence Silicon Ensemble]
      B --> C
  
```

Electrical & Computer ENGINEERING

Who's using Sandbox

- Greg Link , PennState ECE
 - Network-on-Chip research
 - ASIC Flow(Synopsis, Cadence); OKI Libraries and memories
- Ricky Radaell-Sanchez, CMU ECE
 - Network-on-Chip LDPC decoder chip
 - ASIC flow (Synopsis, Monterey), STMicro library
- Theo Theocharides, PennState ECE
 - Neural network face detector
 - ASIC flow (Synopsis, Cadence); OKI library and memories
- Others using FPGA tools, Synopsys for area estimates, Cadence generic PDK analog design, NCSU PDK for AMI 1.6u

Electrical & Computer ENGINEERING



- ### Tech Library Complications
- NDA: No Design Allowed?
 - TSMC, ST:
 - No educational use
 - Specific research use
 - OKI
 - Abstract views only
 - SCMOS based
 - Not very tech specific
 - No memory generators, etc.
- Electrical & Computer ENGINEERING

- ### Agenda
- Full custom design flow (Max Khusid)
 - Better semi custom design flow (Herm and Tom)
 - Sandbox Website and CADFAQ (Max)
 - Discussion and Wrapup
 - Dave: Synergy between Sandbox flow and short courses
 - Promotion of CADFAQ
 - Other topics?
- Electrical & Computer ENGINEERING

Feedback

- We can't do everything
- Big new things
 - Examples: Analog Artist, NeoCell, etc.
 - Realize that these may take some time
- Small adjustments
 - Things that we can do that make what we're doing more useful
 - New class requirements
- Making our job easier
 - Things that we can utilize now
 - Reducing duplicated effort